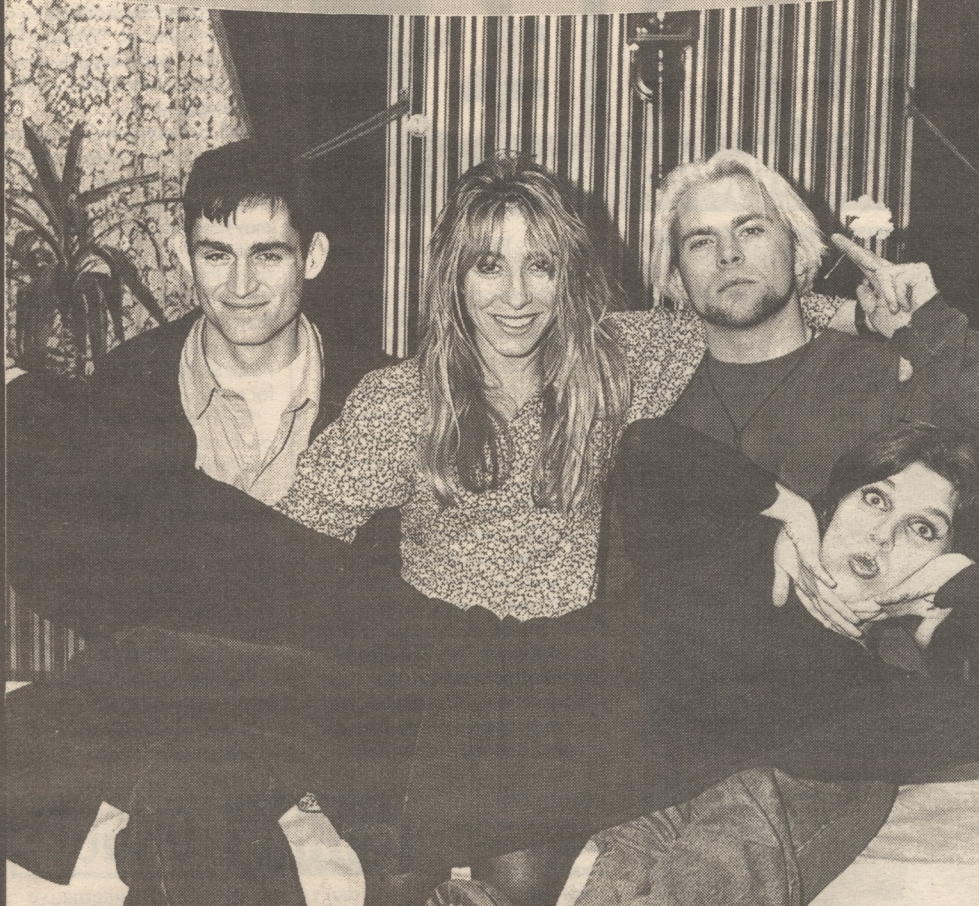


MM BAND FILE



BELLY are (l-r): THOMAS GORMAN (lead guitar); GAILA GREENWOOD (bass); CHRISTOPHER TOLL GORMAN (drums) and TANYA DONNELLY (vocals/guitar)

BELLY

DISCOGRAPHY

SINGLES

"Slow Dust" (4AD), June 1992
 "Gepetto" (4AD), November 1992
 "Feed The Tree" (4AD), January 1992

ALBUMS

"Star" (4AD), January 1992

ORIGIN OF NAME

TANYA: We looked through our lyrics for a good word!

FIRST PUBLIC APPEARANCE

333's, Newport, Rhode Island.

BORN

TANYA: August 14, 1966.
THOMAS: May 20, 1966.
GAILA: October 3, 1960.
CHRIS: August 29, 1967.

EDUCATED

TANYA: Anthropology Major at University of Rhode Island.
THOMAS: University of Rhode Island.
GAILA: B.F.A. Illustration, Rhode Island School of Design.

MUSICAL CAREER

TANYA: Throwing Muses, Breeders.
GAILA: The Dames, Boneyard, Belly (from 1993).
CHRIS: Verbal Assault.

OTHER OCCUPATIONS

TANYA: Print-runner for a famous architect, waitress.
THOMAS: Film-production assistant, waiter.
GAILA: Illustrator at Massachusetts College of Art.
CHRIS: Production assistant for Universal TV.

FAVOURITE RECORDS

TANYA: Iggy Pop: "Lust For Life", The Beatles: "Abbey Road", Patti Smith: "Horses", Mary Margaret O'Hara: "Miss America".
THOMAS: Film Soundtrack: "Midnight Cowboy".
GAILA: Alice In Chains: "Facelift".
CHRIS: The Clash: "London Calling", Husker Dü: "Warehouse".

FAVOURITE BANDS

TANYA: Scarce, Backwash.
GAILA: One Ton Shot, Gun, Lunachicks, Goo Goo Dolls, Boneyard, Verbal Assault, Government Issue.
CHRIS: The Clash, Pavement, Backwash, Pixies, Urge Overkill, Soul Asylum, Dinosaur Jr.

LIKES

TANYA: Sci-fi, aliens, sleeping, staying up late, angels.
THOMAS: Dislikes.
GAILA: Surfing, candy, dogs, horses, pigeons.
CHRIS: Eating, surfing, buying tons of shit, collecting comic books, photography, smoking pot, watching movies.

DISLIKES

TANYA: Nightmares, killers.
THOMAS: Likes.
GAILA: Pussies (people with no balls).
CHRIS: Being sick, not surfing.

FAVOURITE FILMS/TV SHOWS/BOOKS

TANYA: "Raising Arizona", "Fantasia", "Kids In The Hall", "Star Trek: The Next Generation", "Sexing The Cherry" by Jeannette Winterson, "The Wasp Factory" by Iain Banks, "I'm With The Band" by Pamela Des Barres.
GAILA: "Caddy Shack", "SCTV", "Straight On Till Morning" (the Beryl Markham story).
CHRIS: "Slacker", "Reservoir Dogs", "Star Trek: The Next Generation", "Silver Surfer".

BIGGEST INFLUENCES ON CAREER

TANYA: Kristin Hersh.
GAILA: Bootsy Collins, Mirk Mars, Gina Lunachick, Sid Aboruzzi.
CHRIS: Parents (for not giving me any shit).

WHAT WOULD YOU LIKE YOUR EPITAPH TO BE?

TANYA: "Ask me when I'm dying."
GAILA: "I told you that hole looked funny."
CHRIS: "I'd rather not die."

RESIDENCE

BELLY: Newport, Rhode Island.

MAKE OF INSTRUMENTS

TANYA: Gibson Les Paul.
THOMAS: Epiphone.
GAILA: Gibson Thunderbird bass, Gibson SG guitar.